



**ARIET**

# T6KRS ULTRA T10KRS ULTRA

## Single-phase online UPS

Rack/Tower type

Online double conversion



Office and server  
equipment



Medical facilities  
and laboratories



Telecommunications  
systems

# The T6-10KRS ULTRA series online UPS with double voltage conversion is a universal solution that can be installed in either a 19" rack or a floor-standing version.

The device provides a high power factor of 1 (kVA = kW) and reliable protection for connected equipment thanks to modern control technologies and a wide range of network input parameters.

High energy efficiency of up to 96% (up to 98% in ECO mode) significantly reduces operating costs while maintaining maximum power reliability.

The 3.5" color touchscreen LCD display with a user-friendly control panel provides simple and intuitive navigation thanks to interactive icons and informative LED status indicators.

A built-in orientation sensor automatically rotates the screen image depending on the UPS's position (rack or tower), ensuring convenient control and ease of use.



## SCENARIOS

IT infrastructure and office equipment

Hospitals and diagnostic centers

Mobile operators and internet providers

Protecting workstations and servers from power outages.

Power supply for critical systems: laboratory and diagnostic equipment

Protecting switches, routers, and data transmission equipment

## BENEFITS

**An external manual bypass** ensures uninterrupted operation of the critical load during maintenance and testing or in the event of a UPS failure.

**A high output power factor 1 (kVA/kW)** allows for efficient power supply to a wide range of loads without losing rated power or overusing grid resources.

**High efficiency of up to 96%** reduces energy consumption and heat generation of equipment.

**ECO mode with efficiency of up to 98%** reduces operating costs and increases the system's energy efficiency.

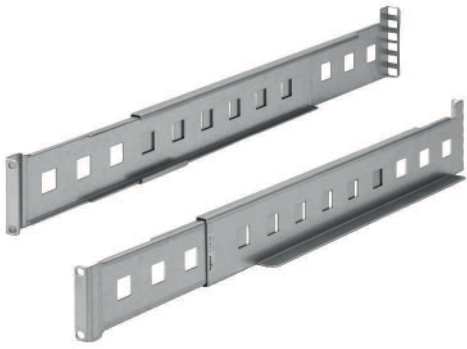
**Support for parallel operation** of multiple UPSs increases fault tolerance and scalability of the system.

**Lithium battery compatibility** ensures longer life and configuration flexibility.

**Intelligent communication interfaces** and SNMP management allow the UPS to be integrated into remote monitoring and control systems.

**Enhanced safety** is provided by the EPO emergency shutdown function and automatic output overcurrent protection.

## Delivery set



### **A set of mounting rails for installation in a server rack.**

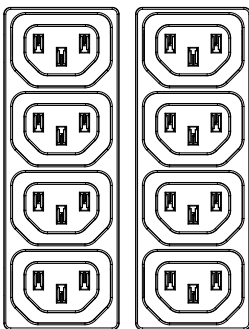
The rails include two guides for mounting in a 19" cabinet with an installation length of at least 925 mm, a pull-out length of at least 543 mm and screw fastening, which ensures reliable fixation and ease of maintenance of the equipment.

### **External manual bypass**

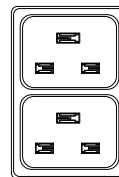
Provides the ability to service and replace equipment without disconnecting the load



### **Terminal block 30/45A - 1 pc.**



**Sockets - IEC C13 - 8 pcs.**



**Sockets - IEC C19 - 2 pcs.**

# Technical specifications

MODEL	T6KRS ULTRA	T10KRS ULTRA
<b>Capacity</b>	6kVA/6kW	10kVA/10kW
<b>Input</b>		
Input voltage	1ph 230V (Configurable via display 210V, 220V, 230V)	
Voltage Range	110~300 VDC	
Input frequency	50/60 Hz ± 5% autosensing	
Power Factor	≥0,99	
THDI	≤5%	
Input voltage range at full load	176V - 280V	
<b>Output</b>		
Output voltage	230V ± 1%	
Voltage Precision	±1%	
Output frequency (nominal)	50/60 Hz (configurable via LCD panel) +/- 0.1%	
THDu	< 3% with linear load	
Transfer Time	Zero	
Waveform	Pure sine wave	
Crest Factor	3:1	
Internal automatic bypass	Yes	
External maintenance bypass	Yes	
<b>Efficiency</b>		
AC/AC	up to 96%	
ECO Mode	up to 98%	
<b>Battery</b>		
Nominal Voltage	240 VDC	
Battery Number	5Ah*20 pcs	9.2 Ah*20 pcs
Extended backup time	Yes	
Automatic detection of battery cabinets	Yes	
<b>Communication and management</b>		
Screen and signalling	3.5" touch screen display with LED status bar	
Remote control	Optional	
Communication ports	ROO, USB, RS232, SNMP RFC1628 (optional WiFi SNMP)	
Back feed protection	Yes	
Emergency power off (EPO)	Yes	
Dry contacts	Yes, embedded	
Parallel mode	Yes	
<b>Environment</b>		
Operating temperature	0~40°C	
Relative humidity	0–95% (non condensing)	
Noise	≤50dB 1 meter away	
Protection index	IP20	
<b>Physical parameters</b>		
Dimensions (W x H x D) (mm)	440 *176 (4u) * 700	
Net weight (kg)	54	74
<b>Certifications</b>	EN 62040-1, EN 62040-2, EN 62040-3	