



ARIET

T6KRS ULTRA

Single-phase online UPS

Rack/Tower type

Online double conversion



Office and server
equipment



Medical facilities
and laboratories



Telecommunications
systems

The T-KRS ULTRA series online UPS with double voltage conversion is a universal solution that can be installed in either a 19" rack or a floor-standing version.

The device provides a high power factor of 1 (kVA = kW) and reliable protection for connected equipment thanks to modern control technologies and a wide range of network input parameters.

High energy efficiency of up to 96% (up to 98% in ECO mode) significantly reduces operating costs while maintaining maximum power reliability.

The 3.5" color touchscreen LCD display with a user-friendly control panel provides simple and intuitive navigation thanks to interactive icons and informative LED status indicators.

A built-in orientation sensor automatically rotates the screen image depending on the UPS's position (rack or tower), ensuring convenient control and ease of use.



SCENARIOS

IT infrastructure and office equipment

Hospitals and diagnostic centers

Mobile operators and internet providers

Protecting workstations and servers from power outages.

Power supply for critical systems: laboratory and diagnostic equipment

Protecting switches, routers, and data transmission equipment

BENEFITS

An external manual bypass ensures uninterrupted operation of the critical load during maintenance and testing or in the event of a UPS failure.

A high output power factor 1 (kVA/kW) allows for efficient power supply to a wide range of loads without losing rated power or overusing grid resources.

High efficiency of up to 96% reduces energy consumption and heat generation of equipment.

ECO mode with efficiency of up to 98% reduces operating costs and increases the system's energy efficiency.

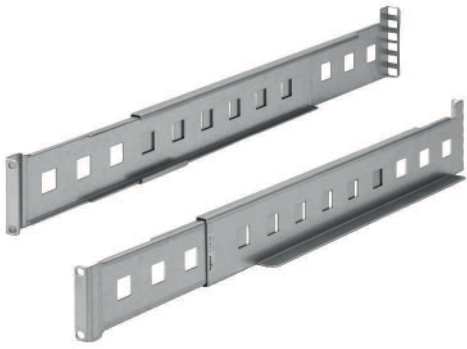
Support for parallel operation of multiple UPSs increases fault tolerance and scalability of the system.

Lithium battery compatibility ensures longer life and configuration flexibility.

Intelligent communication interfaces and SNMP management allow the UPS to be integrated into remote monitoring and control systems.

Enhanced safety is provided by the EPO emergency shutdown function and automatic output overcurrent protection.

Delivery set



A set of mounting rails for installation in a server rack.

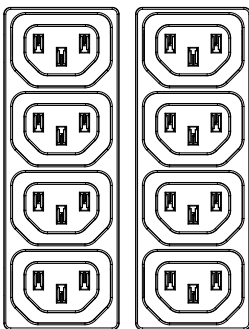
The rails include two guides for mounting in a 19" cabinet with an installation length of at least 925 mm, a pull-out length of at least 543 mm and screw fastening, which ensures reliable fixation and ease of maintenance of the equipment.

External manual bypass

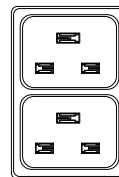
Provides the ability to service and replace equipment without disconnecting the load



Terminal block 30/45A - 1 pc.



Sockets - IEC C13 - 8 pcs.



Sockets - IEC C19 - 2 pcs.

Technical specifications

MODEL	T6KRS ULTRA
Capacity	6kVA/6kW
Input	
Input voltage	1ph 230V (Configurable via display 210V, 220V, 230V)
Voltage Range	110~300 VDC
Input frequency	50/60 Hz \pm 5% autosensing
Power Factor	$\geq 0,99$
THDI	$\leq 5\%$
Input voltage range at full load	176V - 280V
Output	
Output voltage	230V \pm 1%
Voltage Precision	$\pm 1\%$
Output frequency (nominal)	50/60 Hz (configurable via LCD panel) $\pm 0.1\%$
THDu	$< 3\%$ with linear load
Transfer Time	Zero
Waveform	Pure sine wave
Crest Factor	3:1
Internal automatic bypass	Yes
External maintenance bypass	Yes
Efficiency	
AC/AC	up to 96%
ECO Mode	up to 98%
Battery	
Nominal Voltage	240 VDC
Battery Number	5 Ah*20 pcs
Extended backup time	Yes
Automatic detection of battery cabinets	Yes
Communication and management	
Screen and signalling	3.5" touch screen display with LED status bar
Remote control	Optional
Communication ports	ROO, USB, RS232, SNMP RFC1628 (optional WiFi SNMP)
Back feed protection	Yes
Emergency power off (EPO)	Yes
Dry contacts	Yes, embedded
Parallel mode	Yes
Environment	
Operating temperature	0~40°C
Relative humidity	0-95% (non condensing)
Noise	≤ 50 dB 1 meter away
Protection index	IP20
Physical parameters	
Dimensions (W x H x D) (mm)	440 *176 (4u) * 700
Net weight (kg)	54
Certifications	EN 62040-1, EN 62040-2, EN 62040-3