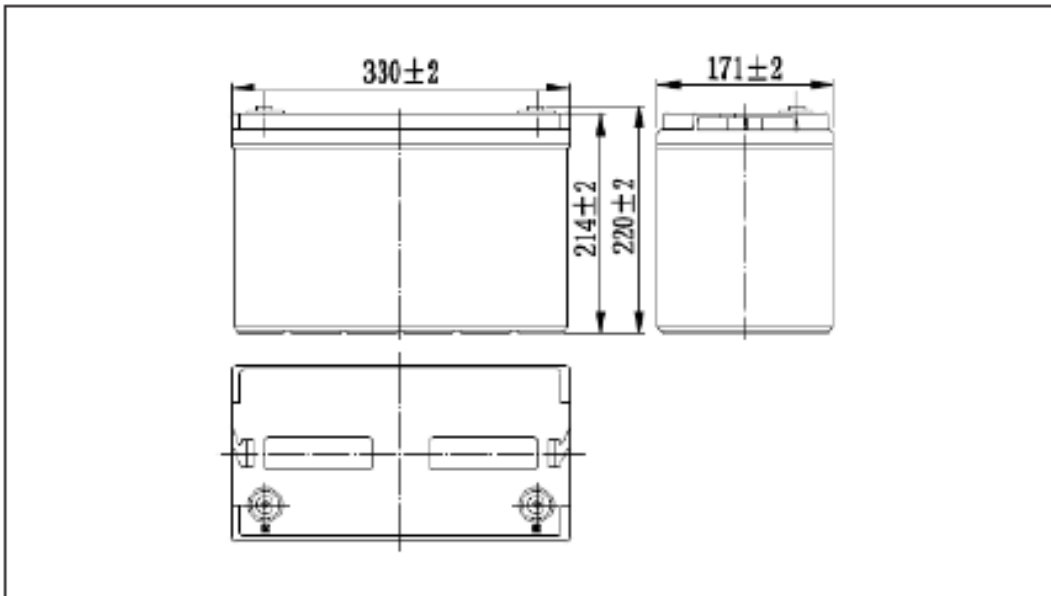
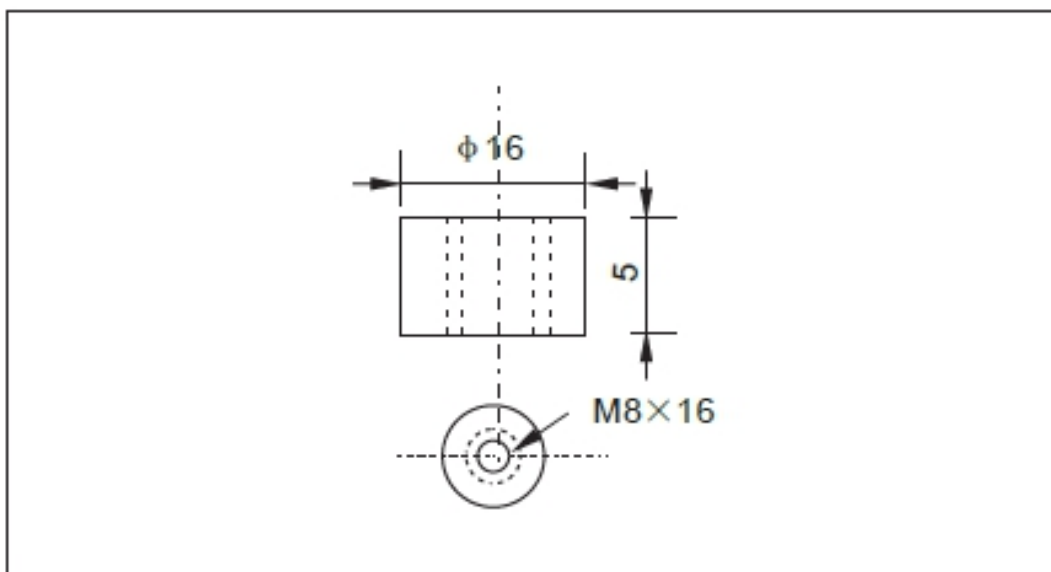


Specification

Nominal voltage		12V
Number of cells		6
Rated capacity (20 h)		100Ah
Rated power (15 min)		390 W/cell
Dimensions	Length	330±2 mm
	Width	171±2
	Height	214±2 mm
	Height (max)	220±2 mm
Weight		32,7 kg


Dimensions (mm)

Terminals


Specification

Capacity (10 hour, 25°C)	100 Ah	
Power (15 min, 25°C)	390W/cell	
Terminal type	8 16	
Internal resistance (fully charged, 25	4 m	
Capacity vs. temperature (10-hour rate)	40°	102%
	25°	100%
	0°	85%
	-15°	65%
Self-discharge (25°)	3 months	Residual capacity 91%
	6 months	Residual capacity 82%
	12 months	Residual capacity 65%
Nominal operating temperature	25° ±3°	
Operating temperature range	Discharge	-15° ~ 50°
	Charge	-10° ~ 50°
	Storage	-20° ~ 50°
Float charge voltage (25°)	13,50 ~ 13,80 V (Temperature compensation - mV/°C)	
Cyclic charge voltage (25°)	14,50 ~ 15,00 V (Temperature compensation - mV/°C)	
Maximum charge current	25	
Maximum discharge current	1200 (5 sec)	
Service life in bu er mode (20°)	12 years	

Battery construction

Component	Positive electrode	Negative electrode	Case	Case cover	Separator	Electrolyte	Safety valve	Terminals
Material	Lead dioxide	Lead	ABS	ABS	AGM	Sulfuric acid	Rubber	Copper

Characteristics of direct current discharge, (25

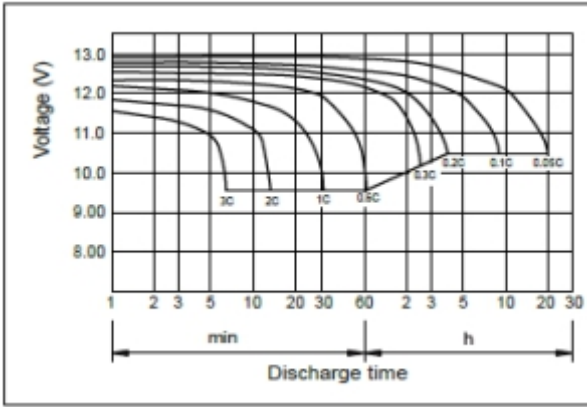
F.V/Time	10min	15min	20min	30min	45min	60min	2h	3h	4h	5h	6h
1.60V/cell	255	208	167	118	88.0	71.8	38.4	27.5	22.2	19.3	16.5
1.67V/cell	243	202	160	114	85.2	70.0	38.0	27.3	22.0	19.1	16.3
1.70V/cell	237	196	157	112	83.6	68.9	37.8	27.2	21.9	19.0	16.3
1.75V/cell	227	189	151	110	81.6	67.6	37.2	27.0	21.7	18.9	16.2
1.80V/cell	214	179	143	105	78.6	65.5	36.3	26.2	21.1	18.3	15.7

Characteristics of constant power discharge, W (25

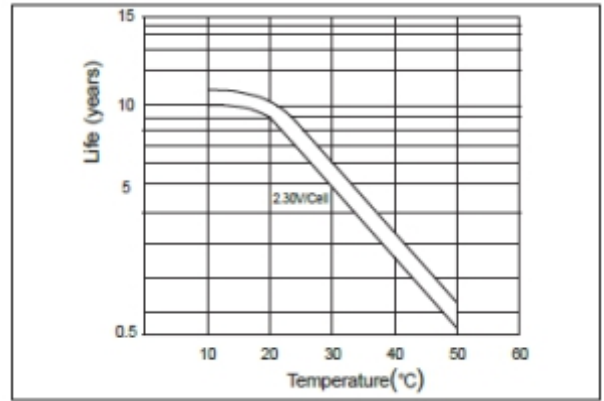
F.V/Time	10min	15min	20min	30min	45min	60min	2h	3h	4h	5h	6h
1.60V/cell	399	402	322	209	170	139	74.8	54.2	43.7	38.2	32.7
1.65V/cell	396	390	309	207	164	135	74.2	53.7	43.3	37.8	32.4
1.70V/cell	393	378	303	207	161	133	73.7	53.5	43.1	37.7	32.2
1.75V/cell	390	365	292	206	157	130	72.6	53.2	42.8	37.4	32.0
1.80V/cell	387	346	277	202	152	126	70.8	51.6	41.5	36.3	31.1
1.85V/cell	359	321	263	185	134	105	61.6	48.5	34.9	29.8	20.1

Note: The above performance data can be obtained within three charge or discharge cycles.

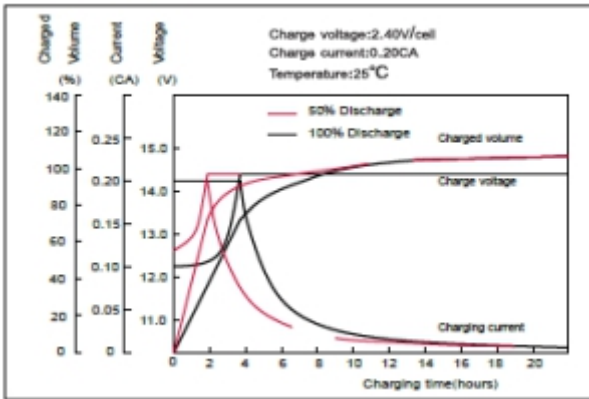
Discharge characteristics (25°)



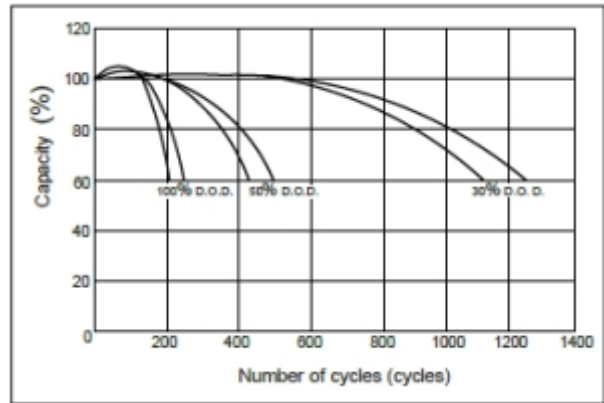
Dependence of service life in bu er mode on t°



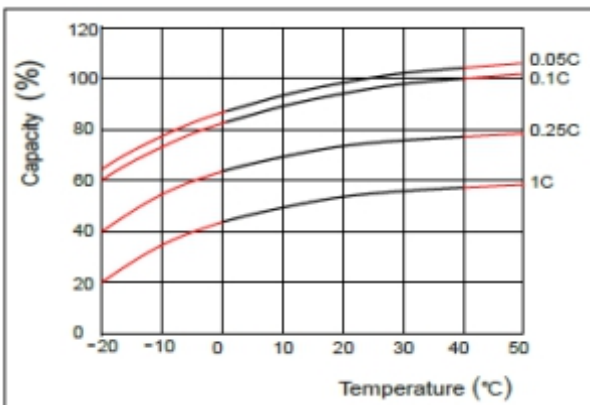
Charge characteristics (25°)



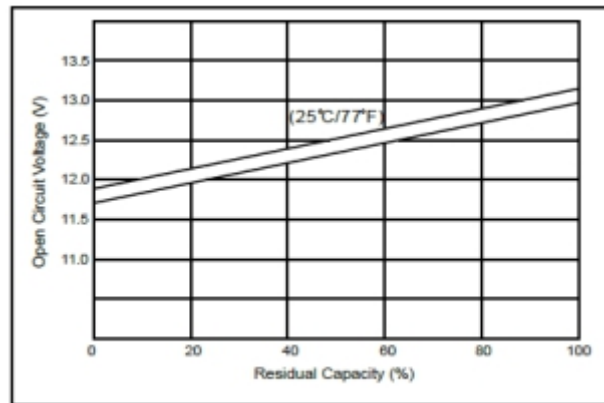
Dependence of cycles on discharge depth (25°)



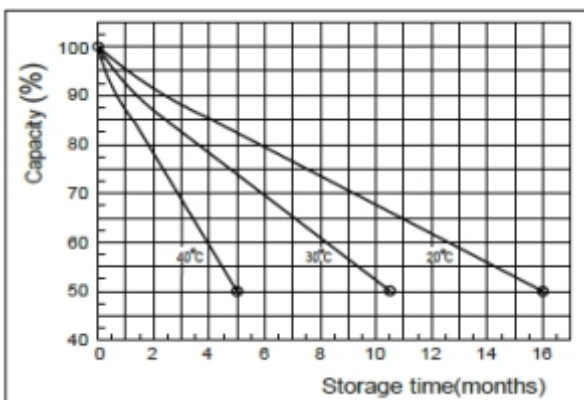
Dependence of capacitance on temperature



Relationship between open-circuit voltage and capacitance (25°)



Self-discharge characteristics



Dependence of charging voltage on t°

